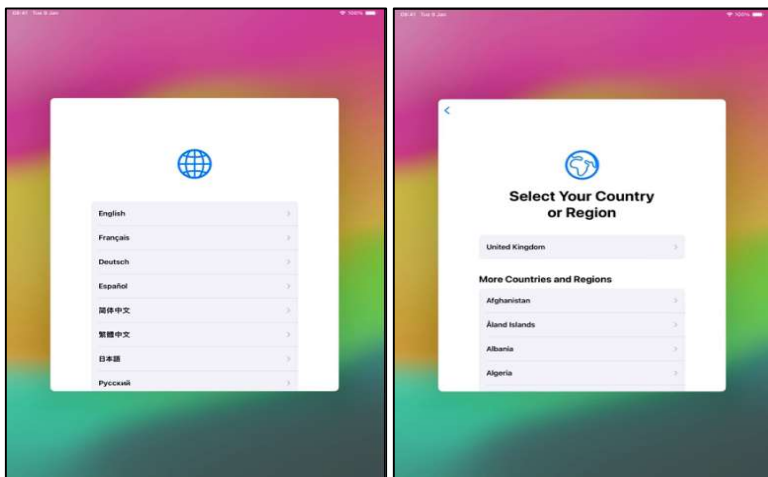


## iPad Setup Instructions – iOS17 Managed Apple ID

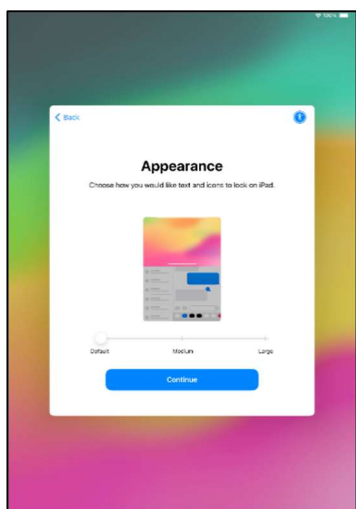
### 1. Configuring Your New iPad



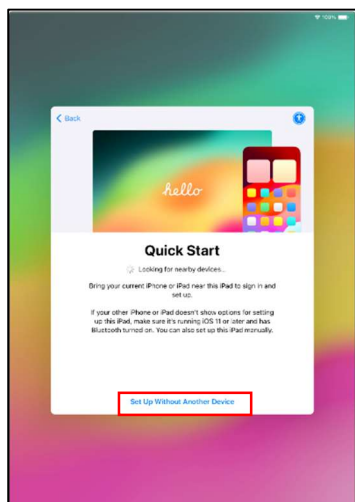
Unbox and power up your iPad.  
Press the home button on the iPad to begin

Select your preferred language

Select “**United Kingdom**”

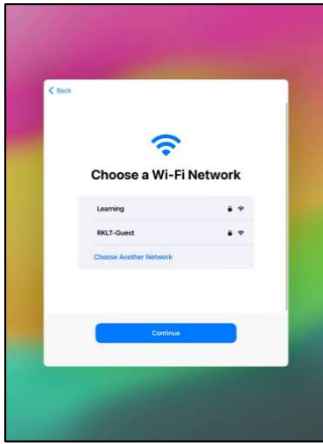


Choose your preferred appearance: Default, Medium or Large



Wait for the iPad to configure

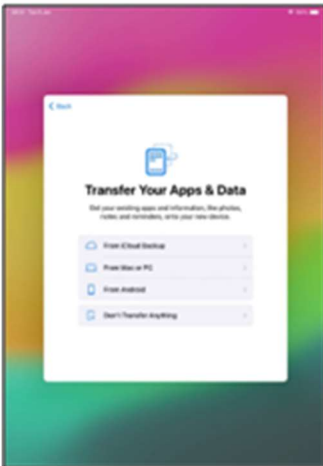
Tap “**Set up without another device**” at the bottom of the screen



Select your home Wi-Fi network

Enter your Wi-Fi password and tap **“Join”**

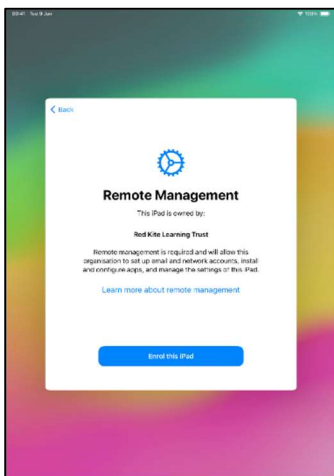
Once connected tap **“Next”** at the top right of the box



If this is your first HGS iPad, select **“Don't Transfer Anything”**.

**DO NOT RESTORE A BACKUP** from a personal device  
- Doing so will cause issues during the setup process

If you **have** had an HGS iPad before, select “Restore from backup” and refer to the **PERSONALISATION** section below



Tap ‘Enrol this iPad’

Wait for the Red Kite Learning Trust set up configuration to be installed

---

## **2. Personalisation**



You will be given an Apple ID, this is setup and managed by the school.

The email address will be **the same as your school email but is not the same account.** You will also be given a **temporary** Apple ID password.

Enter your Apple ID email address into the **Apple ID** field and your temporary Apple ID password into the **Password** field.



You will be prompted to **create a new password** for your Apple ID.

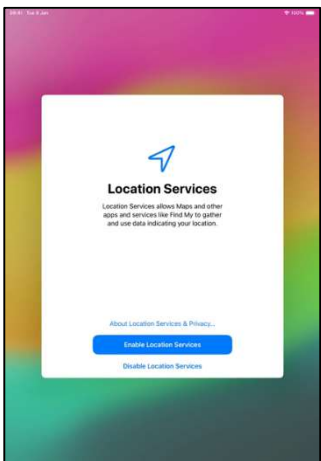
Enter the temporary Apple ID password again.

You will be taken to a second **create a new password** page and be asked to create a new password.

This needs to be **different** to the temporary Apple ID password you have just entered. Enter your own preferred 4 digit password.

Enter the new password you have just typed to verify the password.

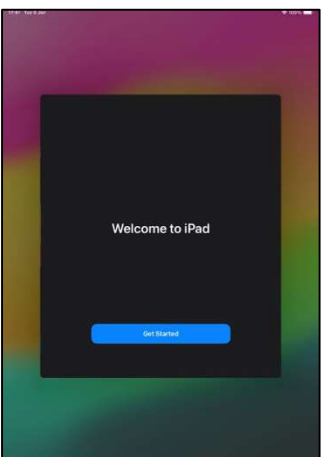
You **need** to remember this password as this will be your new Apple ID password.



If prompted, agree to the terms and conditions

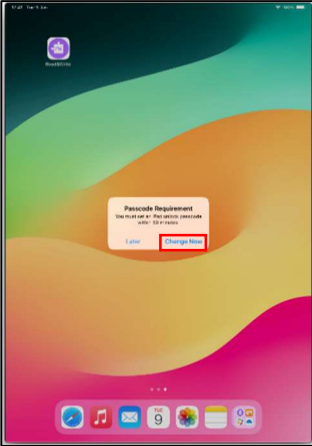
Enable **Location Services**

Select either Light or Dark mode and wait for the iPad to complete set up



If required, tap **Get Started**

You will be taken to the home screen of the iPad



The iPad will prompt you to create a passcode, press **“Change Now”**

Enter your four (or more) character passcode, and press **“Continue”**

Re-enter the passcode and press **“Set Passcode”**

---

**The iPad is now fully setup.**  
**If you have any issues or questions whilst setting up the iPad, you can contact the RKLTL Helpdesk by emailing [helpdesk@rklt.co.uk](mailto:helpdesk@rklt.co.uk)**

---