



SECONDARY

# ENVIRONMENTAL REVIEW

**Completed by (name and year group):**

Georgina Scott	Y8
Matthew MacDermott	Y10
Lugo Skaddelin	Y9
Jake Sandlund	Y10
Naomi Godden	Y8
Chris Inyegrem	Y12

**Date:** 19/11/19



# Biodiversity

Has your school participated in a national observation project this year (e.g. RSPB Big Bird Watch, Big Butterfly Hunt, The Pod's What's Under Your Feet)?

No ✓

One

More than one

Does your school have any plants in containers or beds in the school grounds?

No

Less than 5

More than 5 ✓

Does your school have wildlife or conservation areas inside the school grounds or has it adopted one outside the school grounds?

No ✓

One inside/outside school grounds ✓

Inside and outside the school grounds

Does your school have any of the following?

Bird baths

Newly-planted trees ✓

Species record

Woodland area ✓

Wildflower meadow

Orchard

Animal ID sheets

Pond ✓

Wildflower beds ✓

Long grass ✓

Butterfly or bee friendly plants ✓

Bird or bat boxes

Wildlife camera

Bird hide

Log piles for invertebrates ✓

Hedges ✓

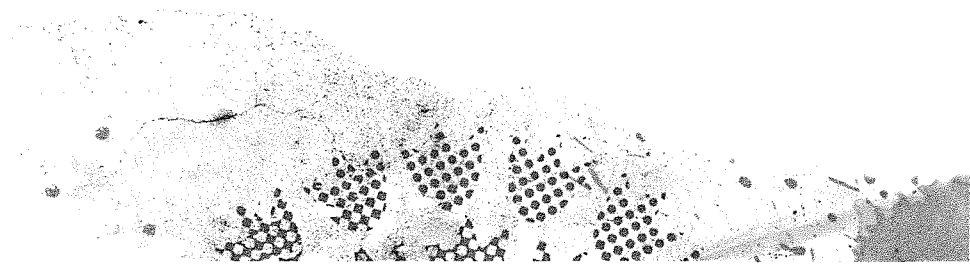
Wildlife feeders

Tick the box below with the total number of items above.

No

One to four ✓

Five or more ✓





# Energy

Is the school's energy information available to you?

 No Yes, when requested Yes, energy meters are easily visible

Are you involved in taking energy readings and informing the school about them?

 No Yes, we take meter readings Yes, we take meter readings and inform the school

Is there someone in your school who has responsibility for monitoring the consumption of energy?

 No Yes, a staff member Yes, students

Has your school selected a green energy tariff?

 No Yes

Do your school grounds have renewable energy sources?

 No One renewable energy source Multiple renewable energy sources



# Global Citizenship

Do pupils have the opportunity to learn another language?

- No  Yes, we learn one other language  Yes, we have a choice of languages

Do you learn about the Sustainable Development Goals?

- No  Yes

Does your school focus on any of these global citizenship topics?

- Fair trade  Conflict resolution  Eco-Schools International  
 Human rights  International pen friends  Twinning  
 Other

Check the box below with the total number of items above.

- None  One  Two  Three  Four  Five+

Does your school act locally whilst thinking globally by participating in:

- Buying fair trade  Fundraising for local charities  Fundraising for international charities  
 Buying local produce

Check the box below with the total number of items above.

- No  One  Two  Three+



# Healthy Living

Does your school encourage healthy food options at break and lunchtimes?

 No Sometimes school provides healthy options School always provides healthy options and actively promotes them

Do you learn about healthy eating and how to prepare and cook healthy meals?

 No Our school teaches us the benefit of a healthy diet School teaches us the benefits of a healthy diet and in food technology lessons we learn to prepare healthy food

Does your school have water fountains and refillable water bottles?

 No One Both

Is your school involved in any of the following health and fitness campaigns?

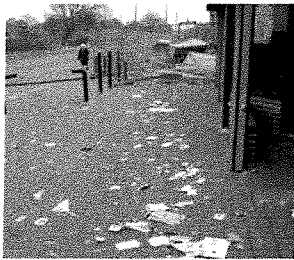
 Daily exercise Walk on Wednesday Meat-free Monday Drink only water Daily fruit Other

Check the box below with the total number of items above.

 No One Two Three+



# Litter



Which of these photos best represents how much litter is present in your school grounds?

Which photo best represents how much litter is present in areas surrounding your schools ground?

What percentage of pupils have participated in a litter pick **this term** (inside or outside school grounds)?

 None 0-20% 20-40% 40-60% 60-80% 80-100%

How many of these activities has your school done to reduce litter?

 Litter picks Increased number of times bins are emptied Educating about litter through assemblies Installing new bins Anti-litter posters Letters to parents about littering Great British School Clean Pupil-led campaign to reduce litter Other

Tick the box below with the total number of items above.

 No One Two Three+



# Marine

Is the fish used in the school canteen caught sustainably?

 No Yes

Does your school organise trips to local beaches, rivers, lakes or aquariums?

 No One class has been More than one class has been All classes have been

Are single-use plastics such as straws, coffee cups, plastic bags or plastic bottles used in your school?

 Yes The school avoids using single-use plastics whenever possible Single-use plastics are banned

Do you learn about marine conservation in your school?

 No Some classes are educated about marine conservation All students are educated on marine conservation





# School Grounds

How often are lessons outside?

Never

Termly

Weekly

*Occasionally*

How many of these facilities do your school grounds have?

Grass playing field

Wildlife area

Reflective area

Woodland

Orchard

Picnic benches/tables

Flower or vegetable beds

Wildflower area

Outdoor classroom

Check the box below with the total number of items above.

None

One

Two

Three+

How many of these facilities are accessible at break and lunchtimes?

None

One

Two

Three+

What percentage of the school boundaries are surrounded by hedges and trees (estimated)?

None

0-20%

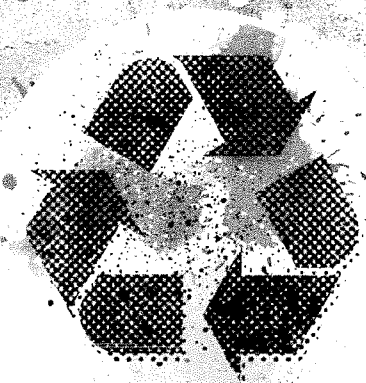
20-40%

40-60%

60-80%

80-100%





# Waste

Does your school carefully control the use of resources such as pens, pencils, glue sticks and plastic wallets?

- No control
- Some control
- Strict control

Does your school encourage the use of reusable items like water bottles, lunch boxes and lunch plates (and discourage the use of disposable items)?

- No
- Some encouragement
- Active encouragement

Has your school tried any of these methods to reduce paper usage?

- Photocopying on both sides
- Letters and newsletters sent via e-mail
- Print Credit for teachers
- Online homework

Tick the box below with the total number of items above.

- None
- One
- Two

Does your school buy any products made from recycled materials?

*Blazers ✓  
PE kit x  
skirt trousers*

- Paper *Mix*
- Toilet tissue and hand towels *✓*
- Uniforms
- Exercise books
- Pencils
- Other

Check the box below with the total number of items above.

- None
- One
- Two
- Three+

*become  
01423  
873666*



# Water

Is the school's water meter easily visible to students and are students involved in taking and displaying water readings?

 No The water meter is easily visible to students Students take and display water meter readings

Does your school have any of these water saving devices?

 Low-volume flush Tap inserts Water Saving Hippos Flush on demand urinals Push taps Other

Check the box below with the total number of items above.

 No One Two Three+

What percentage of the toilets in school are dual flush or reduced capacity?

 0% Less than 50% More than 50%

Are school plants watered using rain or grey water?

 No Yes

Are students educated and informed about the importance of saving water (have you visited or been visited by your water supplier)?

 No Yes



**Things we are doing well:**

Biodiversity  
Global citizenship  
Healthy Living - options available + education  
School grounds  
Transport - low car use  
Energy

**Things we could be doing better:**

Energy - switch-off campaigns  
Healthy Living - campaigns e.g. drink only water, meat-free Monday, daily exercise, daily fruit → encouragement  
Litter - education, campaigns, litter picks, communication  
Transport - active travel campaigns  
Waste - monitoring of waste, recycled products  
Marine - education - not priority given inland location?

**Topics we want to work on during our Action Plan:**

Healthy Living  
Waste / Litter  
Energy? Already a school focus

**Don't forget to inform your school about your findings.  
The next step is your Action Plan.**